



Instructions

JEEP JT - REAR SEAT DELETE 60% SUB ASSEMBLY

Thank you for purchasing your Rear Seat Delete from AAL! We greatly appreciate your trust in our company. We take that purchase and your commitment to us very seriously. If you have any questions along the way, please don't hesitate to give us a call at 385.202.4188.

****Please read these instructions thoroughly before starting this project.****



NOTE: These instructions pertain to the 60% (passenger side) component of the seat delete only. The two other connecting sub assemblies (the 40% seat delete and M.A.S.S. system) have their own respective instruction sheets. Start with this assembly first if you have purchased the 40% side and or the M.A.S.S. system.

Tools Required:

There is more than one tool for every job, but below is the list of tools we use for this installation.

- 4mm Hex Key Allen Wrench
- 5mm Hex Key Allen Wrench
- 8mm Hex Key Allen Wrench
- 10mm Hex Socket or wrench

What's included:

60% RSD Parts:

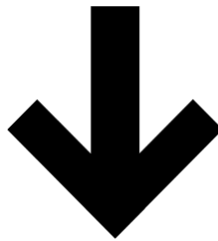
Inboard Anchor	1	Outboard Access Door Bracket	1
Outboard Anchor	1	Inboard Access Door Bracket	1
Platform	1	Rear Access Door Bracket	1
Front Anchor	1	Front Access Door Bracket	1
Long Nut Plate	1	Access Door Support	2
Short Nut Plate	1	Side Door Front Bracket	1
Main Support	2	Side Door	1
Access Door	1	Side Door Rear Bracket	1
Outboard Support Rail	1		

Hardware:

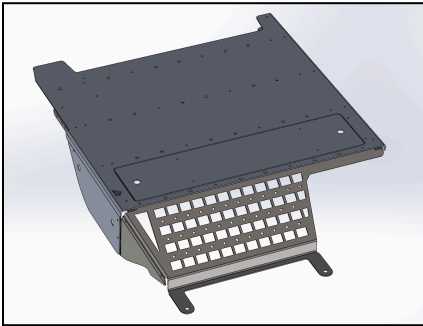
Magnet - 3/4" - Round	4	Nylon Insert Nut - M6 - 1.00 mm	13
Thumb Screw Bolt - M6x12mm - 1.0 mm	3	Hex Head Bolt - M10x50 mm - 1.50 mm	2
Flat Head screws - M6x14mm - 1.0 mm	8	Aluminum Spacer - 12mm inner 28 outer	12
Flat Head Bolt - M6x8mm - 1.0 mm	25	Flat Washer - M10	2
Button Head Bolt - M6x14mm - 1.0 mm	11	Button Head Bolt - M8x16mm - 1.25 mm	2

Part Overview and Prep

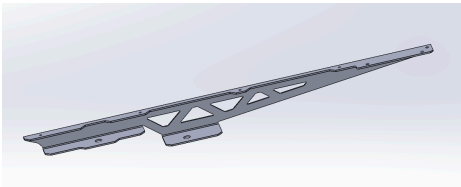
First lets review images of all the necessary parts and hardware to ensure we have everything we need for the installation process



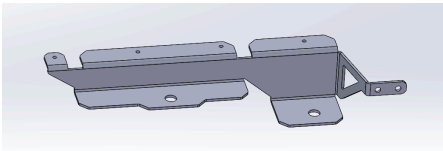
60% RSD Parts:



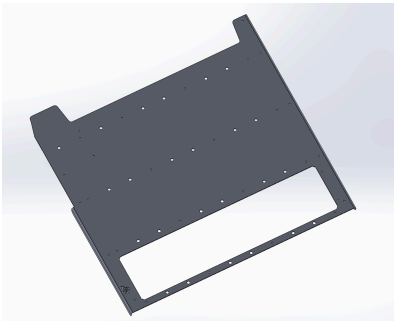
Inboard Anchor (1):



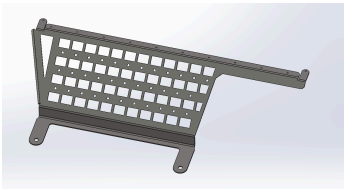
Outboard Anchor (1):



Platform (1):



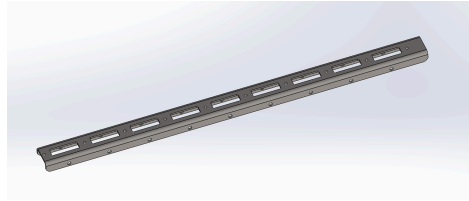
Front Anchor (1):



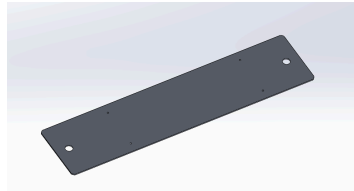
Long Nut Plate (1):



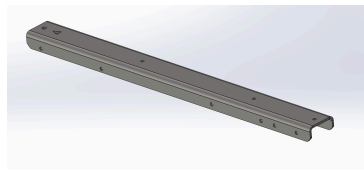
Main Support (2):



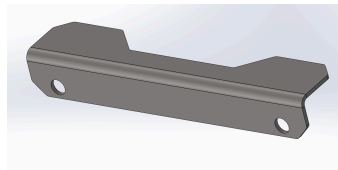
Access Door (1):



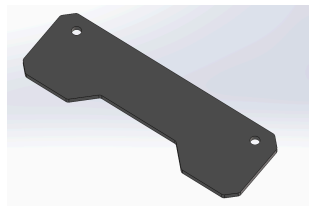
Outboard Support Rail (1):



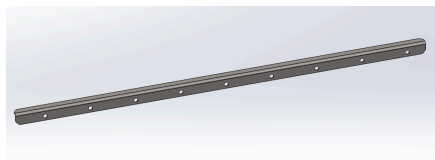
Outboard Access Door Bracket (1):



Inboard Access Door Bracket (1):



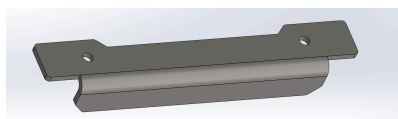
Rear Access Door Bracket (1):



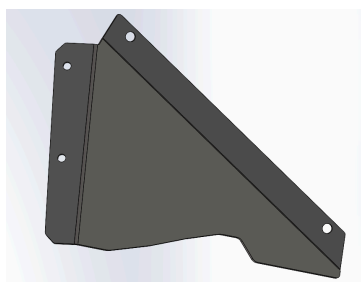
Front Access Door Bracket (1):



Access Door Support (2):



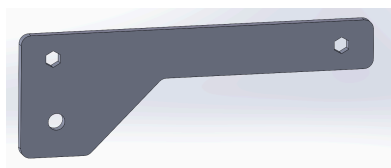
Side Door Front Bracket (1):



Side Door (1):



Side Door Rear Bracket (1):



Hardware:

Magnet - 3/4" - Round



Thumb Screw Bolt - M6x12 mm



Flat Head Bolt - M6x14 mm



Flat Head Bolt - M6x8 mm



4 Button Head Bolt - M6x14 mm



11

Nylon Insert Hex Nut - M6

13

3



Hex Head Bolt - M10x50 mm

2



Aluminum spacer - 12mm inner - 28 outer

12

8



25 Flat Washer - M10

2



Once we've confirmed that we have everything, we can begin constructing by preparing the truck bed for installation:

i) The first step is to remove all rear floor mats, the accompanying snaps that hold them in, and the rear seats themselves. The base carpets can stay in place. The base should look completely empty

ii) If you currently have a MASS platform installed, you will need to remove the small access cover on the driver side front of the platform towards the middle. This will give you access to the one bolt holding the seat assembly. **Do not discard, as it will be reinstalled.**

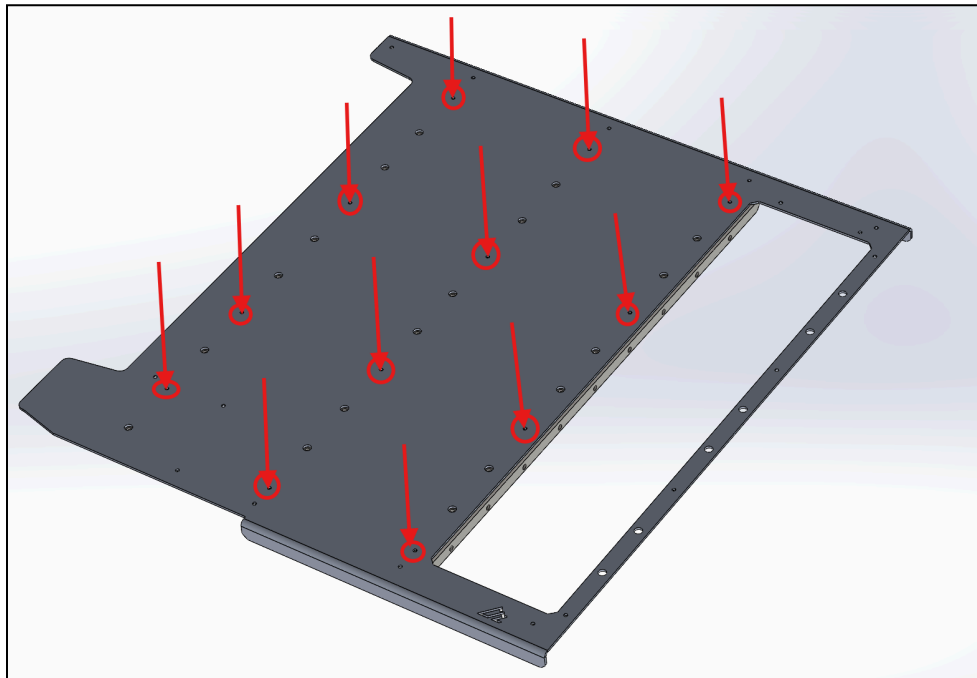
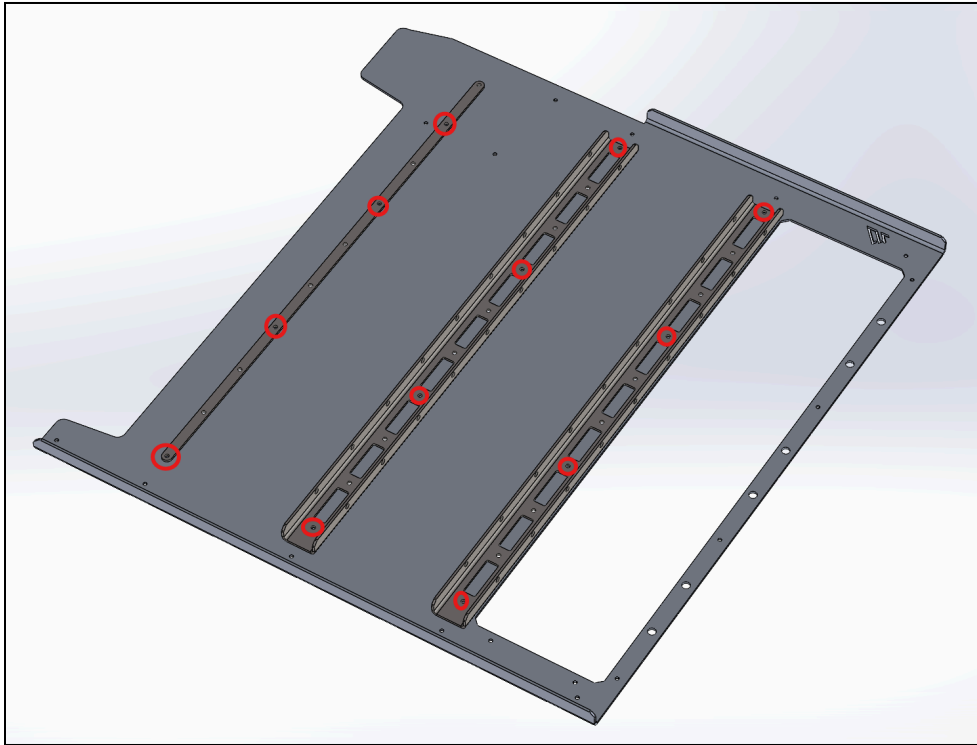
iii) The last preliminary step is to move the front driver and passenger seats forward all the way and remove the two rear **T50 Torx** anchor bolts on the passenger side front seat. Once removed, In the recess of the seat rails (see photo), place **(6) 12mm inner - 28 mm outer Aluminum spacers** for each seat bolt. These are necessary for proper fitting of the mounting brackets.



Do this on both sides of the rear of the front passenger seat. Once these steps are complete, we can take a look at all of the parts and hardware required to begin assembly

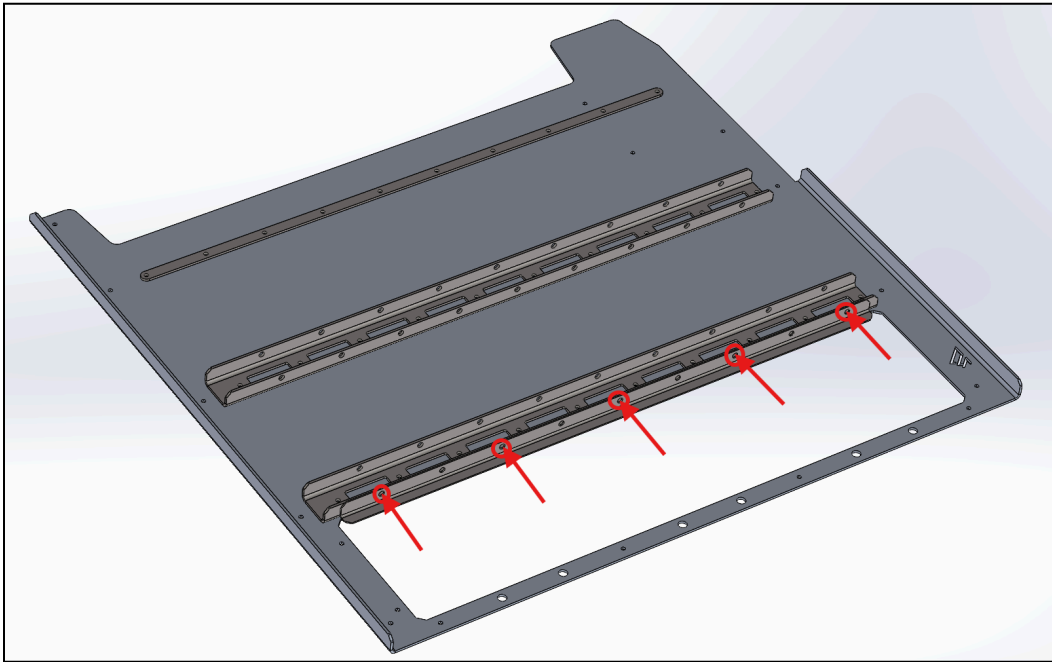
Step 1 - Attach Brackets to the Passenger Plate

Using (1) M6x8mm Flat Head Bolts (No Nuts Necessary), attach the 2 Main supports, Long Nut Plate, and short Nut Plate to the Platform piece. Be sure to bolt through the top of the Platform



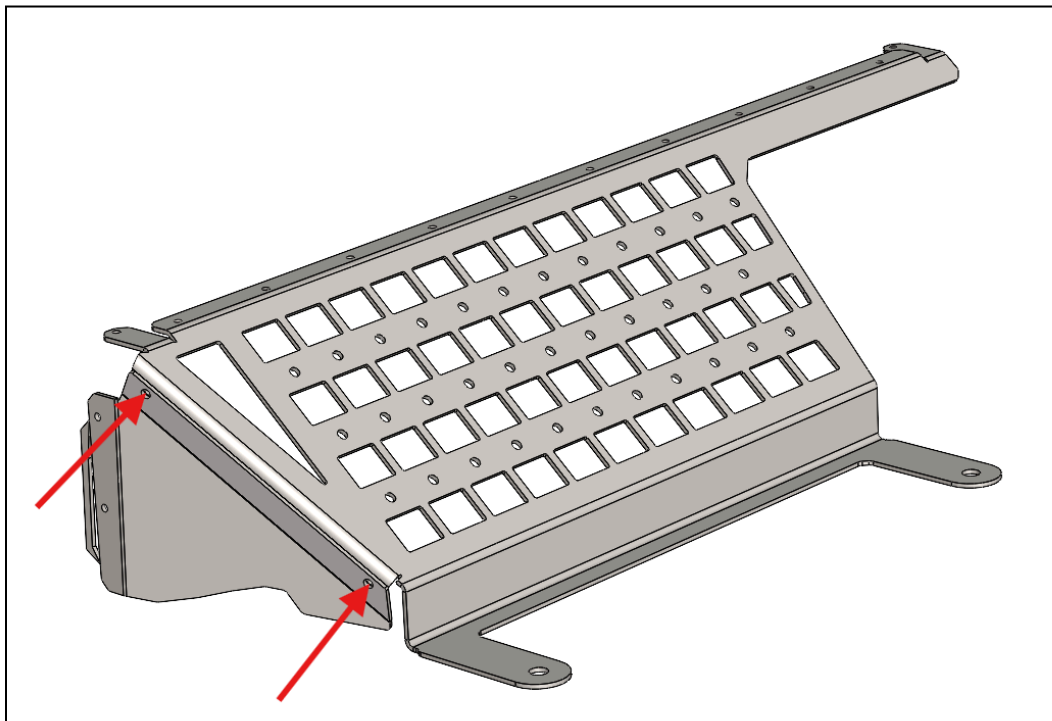
NOTE: Every time a counter-sunk (Flat) bolt) required, the hole will have a hexagon shaped profile. This can clarify which hole to bolt into

Then using **(5) M6x14mm Button Head Bolts** and **(5) M6 Nylon Nuts**, attach the **Rear Access Door Bracket** to the **Main Support**.

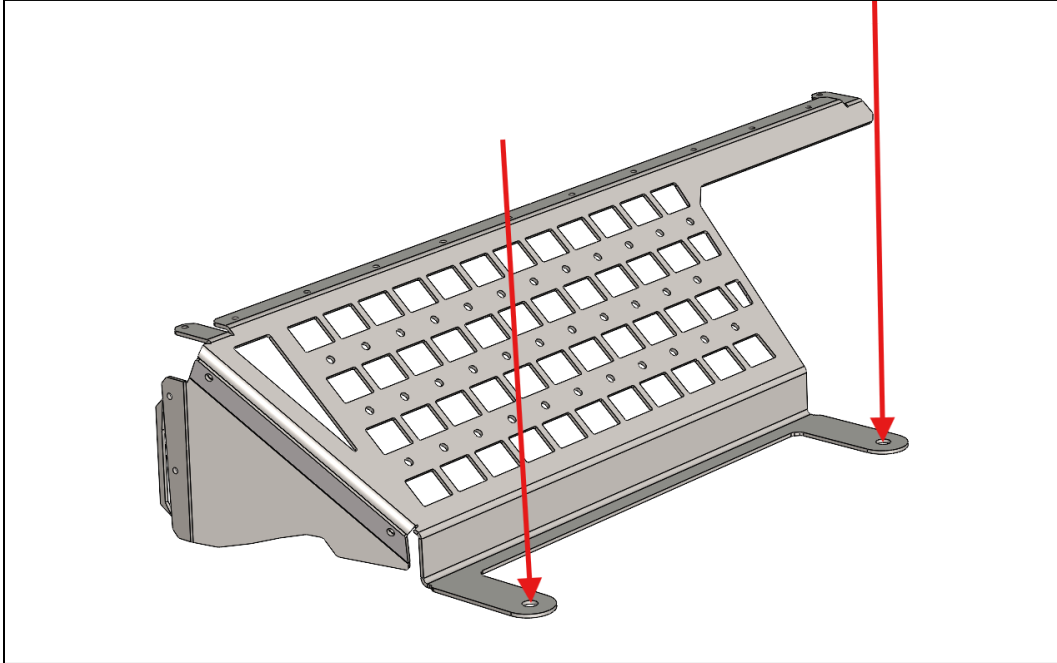


Step 2 - Attach the Mounting Brackets to the Floor Board

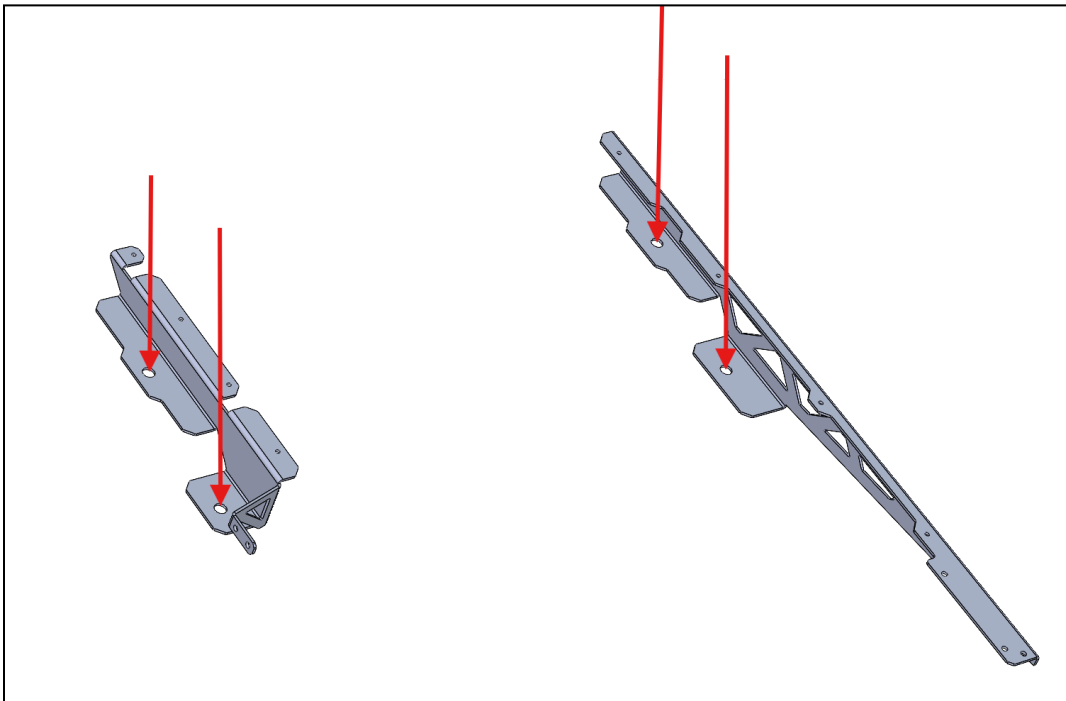
First using **(2) M6x14mm Button Head Bolts** and **(2) M6 Nylon Nuts**, fasten the **Side Door Front Bracket** to the **Front Anchor**



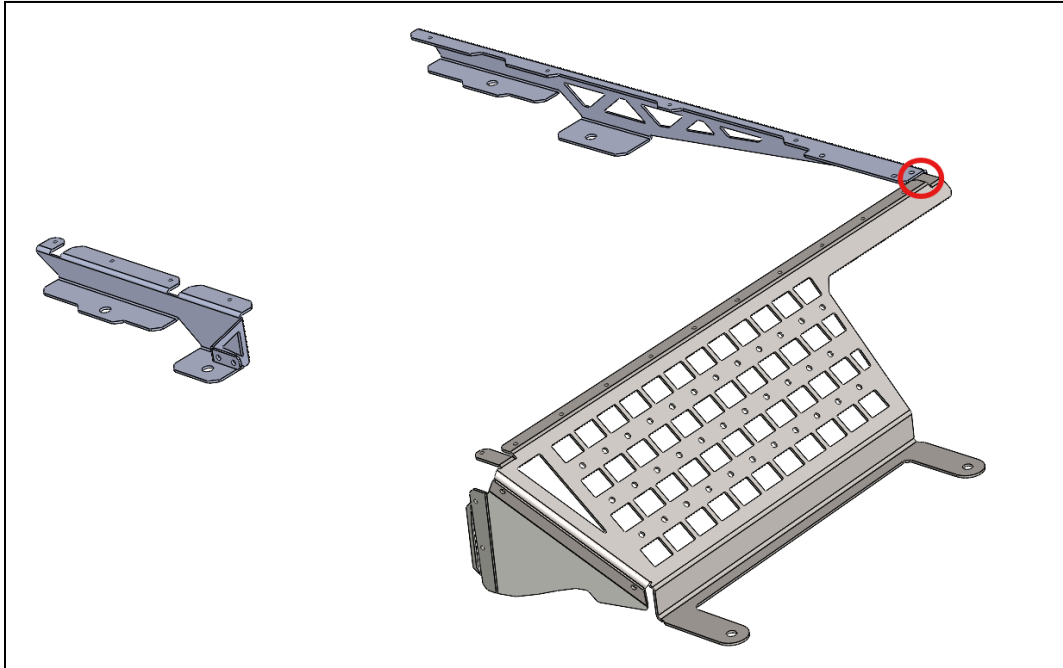
Then using the **(2) M10 Hex Head Bolts** and **(2) M10 Washers**, fasten the **Front Anchor** to the floorboard using the rear slots of the passenger front seats where we placed our aluminum spacers earlier.



Next using the 4 Factory M12 passenger seat bolts, bolt the **Outboard** and **Inboard Anchors** to the floor board of the vehicle. Ensure that the end of the **Inboard Anchor** (the rightmost piece) rests on top of the **Front Anchor**

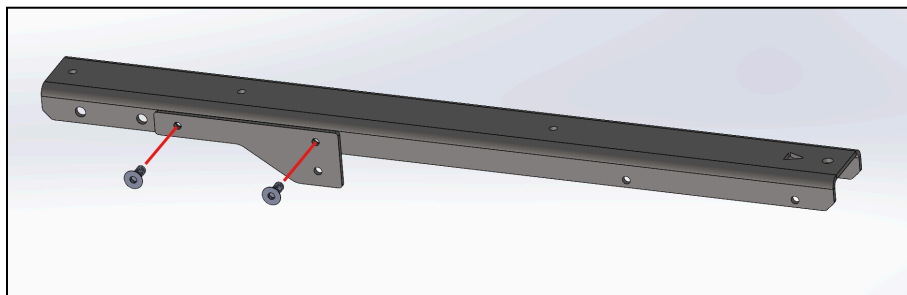


At this point the assembly should look something like this,

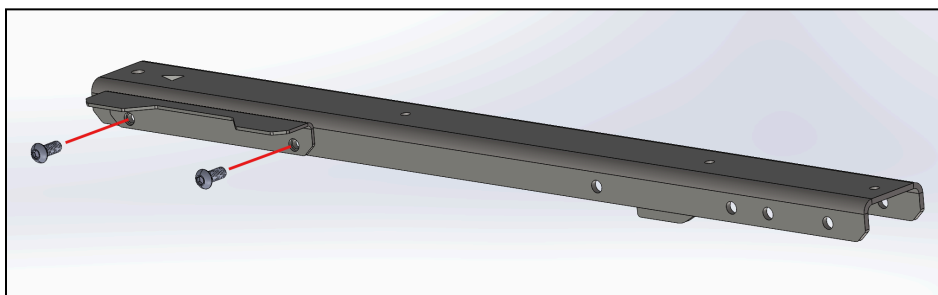


Step 3 - Assemble and Attach the Outboard Support Rail

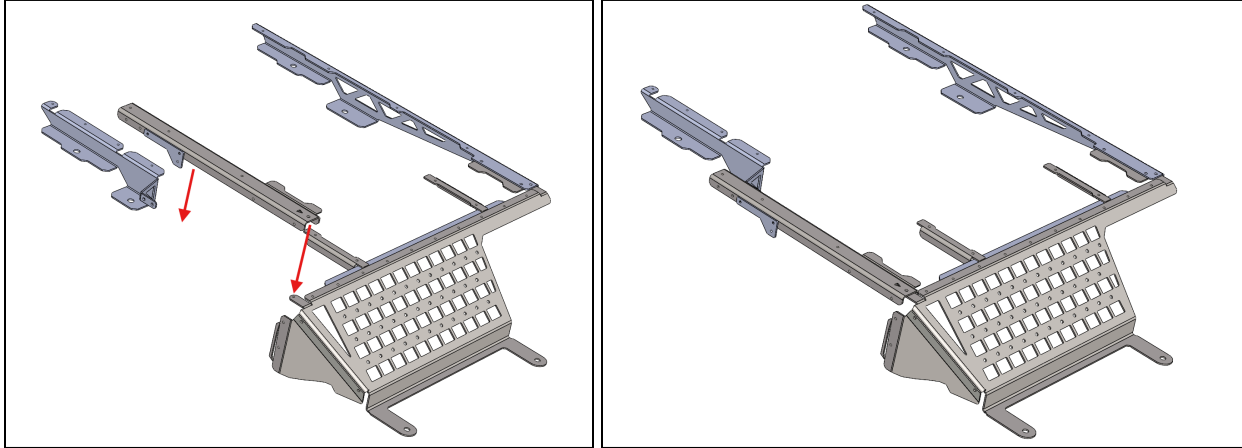
Using (2) **M6x14mm Flat Head Bolts** and (2) **M6 Nylon Nuts**, fasten the **Side Door Rear Bracket** to the **Outboard Support Rail**



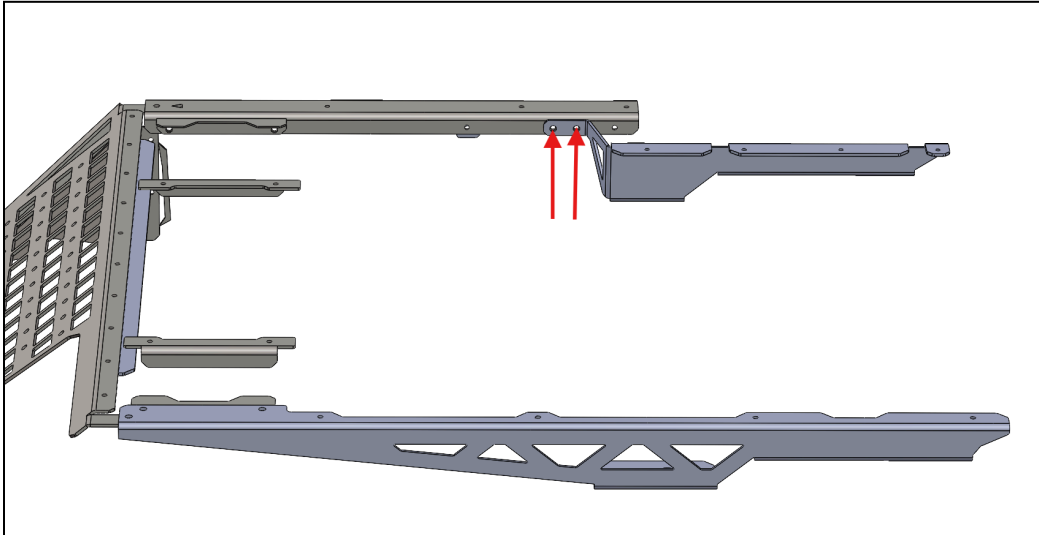
Then using (2) **M6x14mm Button Head Bolts** and (2) **M6 Nylon Nuts**, fasten the **Side Door Front Bracket** to the **Front Anchor**



Once these plates are attached, we can add it to our existing fixture by aligning the rail as shown below and fastening to the **Outboard Anchor**

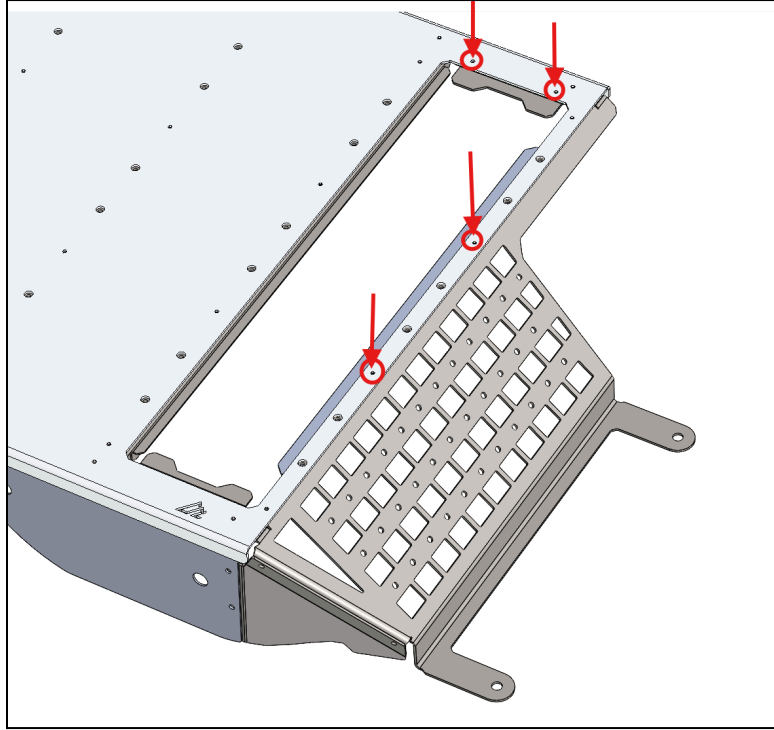


To do so we will use **(2) M6x14mm Button Head Bolts** and **(2) M6 Nylon Nuts** as shown below

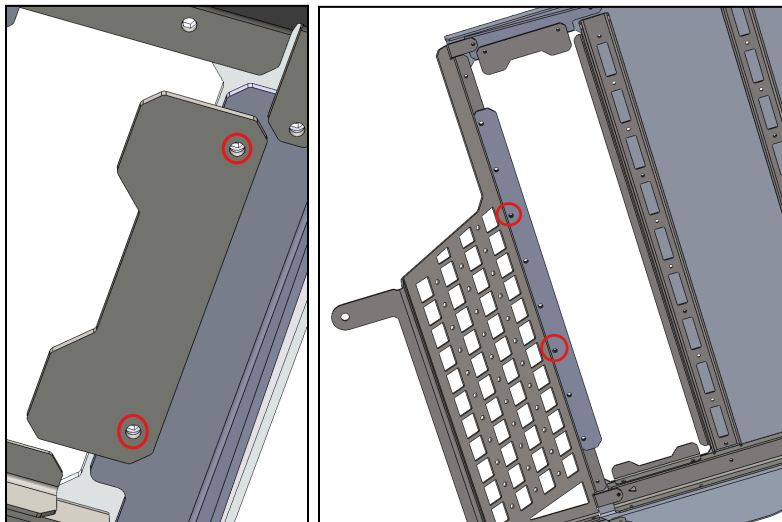


Step 4 - Attach the Platform to the frame

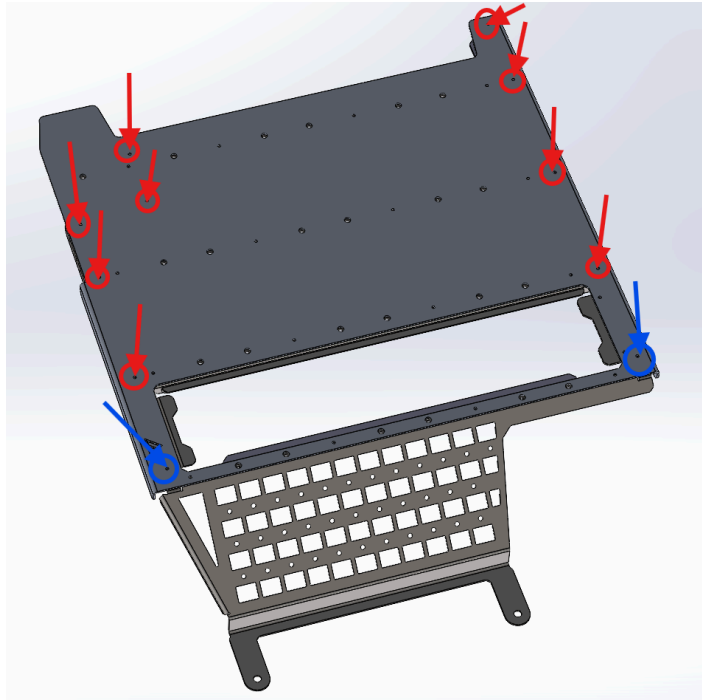
The First step in attaching the platform is taking care of the **Front Door Access Bracket** and **Inboard Access Door Bracket**. The bolts that attach the brackets to the frame also attach the platform to the frame which can be finicky so lets get it out the way



The **Inboard Access Door Bracket** attaches using (2) **M6x14mm Flat head Bolts** aligned as shown below, under both the **platform** and **Inboard Anchor**. The exact same process applies for the **Front Access Door Bracket**. Attach using (2) **M6x14mm Flat head Bolts** aligned as shown below.

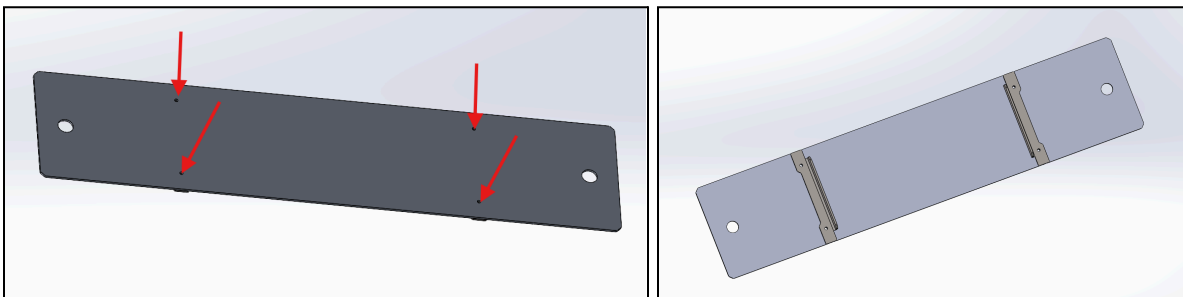


Once these brackets are fastened, secure the rest of the platform using **(9) M6x8mm Flat head Bolts (Red)** and **(2) M6x14mm Button Head Bolts (Blue)**.

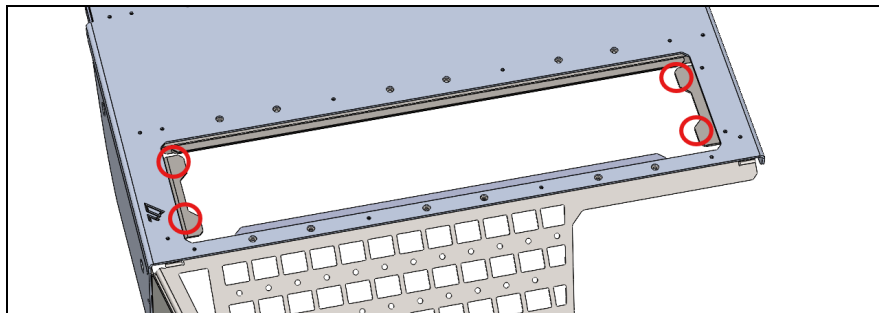


Step 5 - Assemble and Attach the Access Door

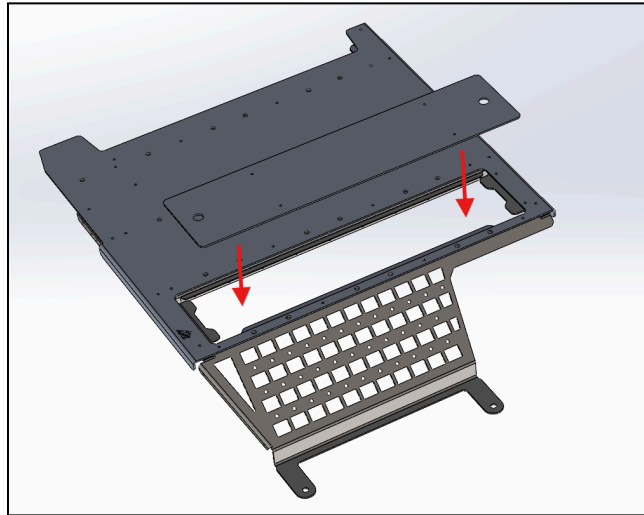
Install the **Access Door Braces** using **4 Flat Head - M6x8 mm Bolts (No Nuts Required)**



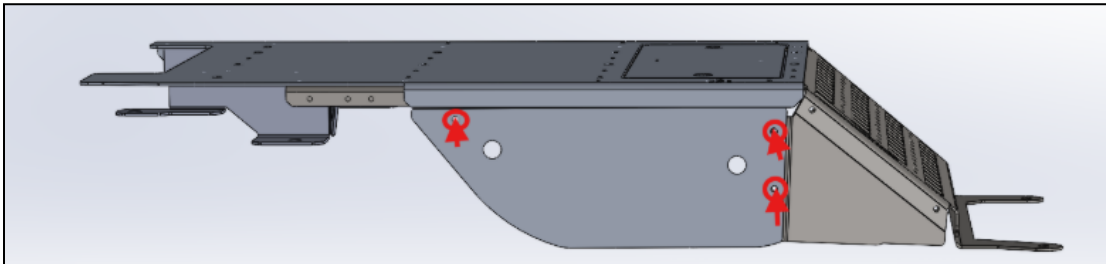
Place **(4) Round magnets** on the highlighted spaces below



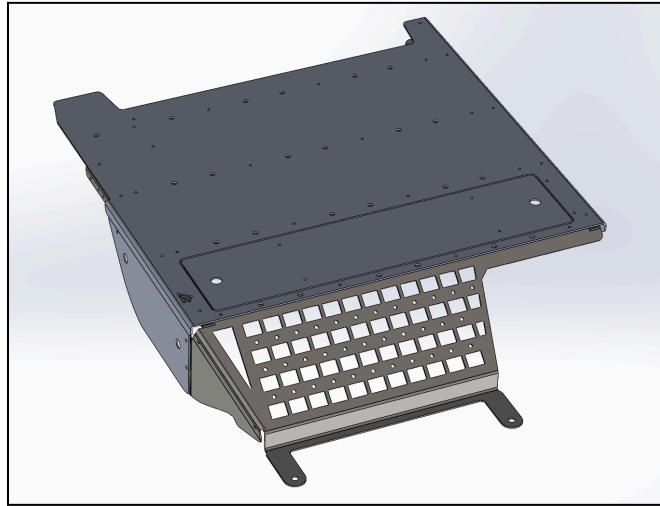
Simply set the **Access Door** on top of the magnets and it should set into place firmly.



Finally, bolt in the **Side Panel** using the three thumb screws in the places circled below.



Your 60% rear seat delete is complete!



Share Your Photos!

We take great pride in building our products and we hope that pride extends to you after installing your [Insert Name of Product]. If you are able to share your photos online (Facebook and Instagram), please tag **@AmericanAdventureLab**. We would love to see how it turned out and give you some reciprocal attention in return!

Congrats! You're all done!

Thank you!

At American Adventure Lab, we strive to improve anywhere we can. If you experience any issues with this product or have any suggestions, please let us know.

If you have any questions or concerns, please don't hesitate to reach out to us at 385.202.4188 or via email at Support@erp.adventurelab.com.

